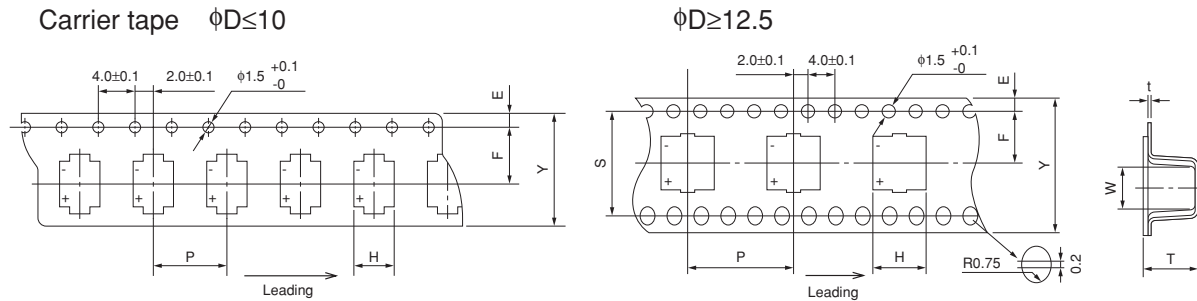


Taping Specifications

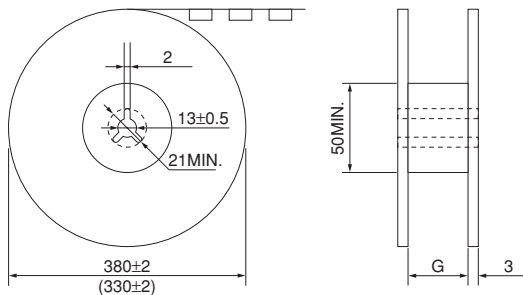
Surface Mount Type Taping Specifications



(Unit:mm)

Size(φD×L)	Y±0.3	H±0.2	W±0.2	P±0.1	E±0.1	F±0.1	T±0.2	t	S±0.1
φ6.3×3.25	16.0	7.0	7.0	12.0	1.75	7.5	3.7	0.4	—
φ5×3.9	12.0	5.7	5.7	12.0	1.75	5.5	4.5	0.4	—
φ6.3×3.9	16.0	7.0	7.0	12.0	1.75	7.5	4.5	0.4	—
φ4×4.5	12.0	4.7	4.7	8.0	1.75	5.5	5.0	0.4	—
φ5×4.5	12.0	5.7	5.7	12.0	1.75	5.5	5.0	0.4	—
φ6.3×4.5	16.0	7.0	7.0	12.0	1.75	7.5	5.1	0.4	—
φ3×5.4	12.0	3.7	3.7	8.0	1.75	5.5	5.8	0.4	—
φ4×5.4	12.0	4.7	4.7	8.0	1.75	5.5	5.8	0.4	—
φ5×5.4	12.0	5.7	5.7	12.0	1.75	5.5	5.8	0.4	—
φ6.3×5.4	16.0	7.0	7.0	12.0	1.75	7.5	5.8	0.4	—
φ4×6.0	12.0	4.7	4.7	8.0	1.75	5.5	6.4	0.4	—
φ5×6.0	12.0	5.7	5.7	12.0	1.75	5.5	6.4	0.4	—
φ6.3×6.0	16.0	7.0	7.0	12.0	1.75	7.5	6.5	0.4	—
φ6.3×7.7	16.0	7.0	7.0	12.0	1.75	7.5	8.2	0.4	—
φ8×10.2(10.5)	24.0	8.7	8.7	16.0	1.75	11.5	11.1	0.4	—
φ10×7.7	24.0	10.7	10.7	16.0	1.75	11.5	8.3	0.4	—
φ10×10.2(10.5)	24.0	10.7	10.7	16.0	1.75	11.5	11.2	0.4	—
φ12.5×13.5	32.0	13.2	13.2	24.0	1.75	14.2	14.3	0.5	28.4
φ16×16.5	44.0	17.5	17.5	28.0	1.75	20.2	17.3	0.5	40.4

Reel



	G
φ3,φ4,φ5	14
φ6.3	18
φ8,φ10	26
φ12.5	34
φ16	46

φD×L(mm)	Quantity of 1 Reel(φ380)	Quantity of 1 Reel(φ330)	Quantity of 1 package(Reel)
φ5×3.9	—	1000	5
φ6.3×3.25,3.9	—	1000	5
φ4×4.5	2000	1500 *	5
φ5×4.5	—	1000	5
φ6.3×4.5	—	1000	5
φ3×5.4	2000	1500 *	5
φ4×5.4	2000	1500 *	5
φ5×5.4	—	1000	5
φ6.3×5.4	—	1000	5
φ4×6.0	2000	1200 *	5
φ5×6.0	1000	800 *	5
φ6.3×6.0	1000	800 *	5
φ6.3×7.7	900	500 *	5
φ8×10.2(10.5)	500	300 *	3
φ10×7.7	500	400 *	3
φ10×10.2(10.5)	500	300 *	3
φ12.5×13.5	—	200	2
φ16×16.5	—	125	2

*Reel code has to be specified after the model number.

Model No. 25CE47BS+E

Reel code

When you place an order, please make sure that order should be integral multiple of the minimum packing unit.

Taping Specifications

Radial Lead Type Taping Specifications for Automatic Inserting Machines

Fig.1

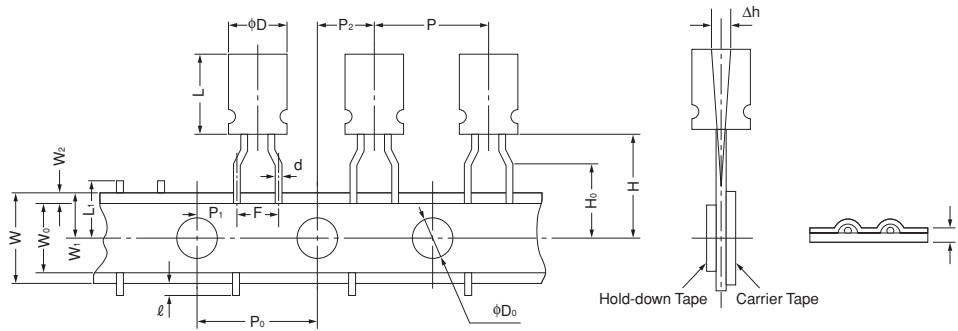


Fig.2

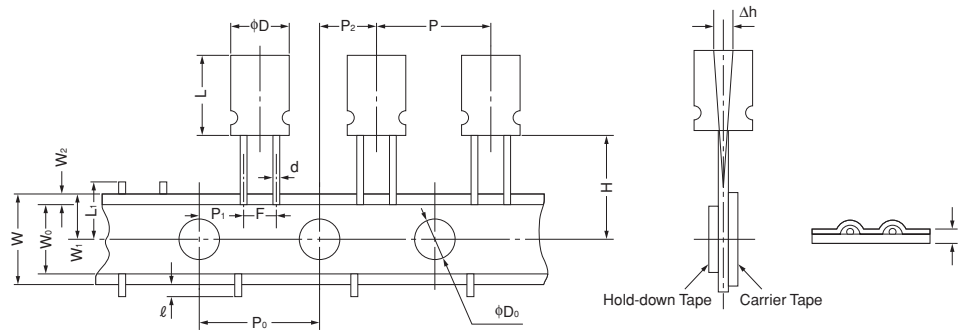
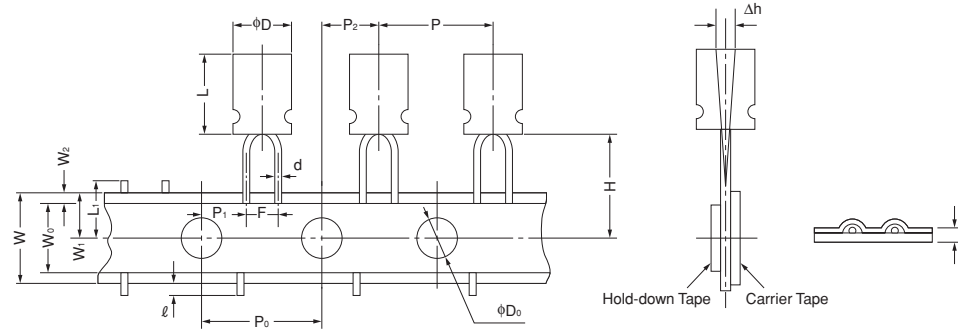


Fig.3



(Unit:mm)

Product Outer Dimensions		Φ3toΦ6.3×5 Φ4toΦ6.3×7.5	Φ5×11 Φ6.3×11	Φ8	Φ10	Φ12.5	Φ16 ×25	Φ3 ×5	Φ4toΦ5×5 Φ4toΦ5×7	Φ6.3×5 ×11	Φ5 ×11	Φ6.3 ×11	Φ8
Fig. No.		1	1	1	2	2	(★3)	1	3	2	3	2	2
Lead wire interval	F	^{+0.8} _{-0.2} (★1)	5.0	5.0	5.0	5.0	7.5	2.5	2.5	2.5	2.5	2.5	3.5
Pitch between components	P	±1.0	12.7	12.7	12.7	12.7	15.0	30.0	12.7	12.7	12.7	12.7	12.7
Sprocket hole pitch	P ₀	±0.2	12.7	12.7	12.7	12.7	15.0	15.0	12.7	12.7	12.7	12.7	12.7
Sprocket hole position	P ₁	±0.5	3.85	3.85	3.85	3.85	5.0	3.75	5.1	5.1	5.1	5.1	4.6
	P ₂	±1.0	6.35	6.35	6.35	6.35	7.5	7.5	6.35	6.35	6.35	6.35	6.35
Lateral deviation	Δh	±1.0	0	0	0	0	0	0	0	0	0	0	0
Carrier tape width	W	±0.5	18.0	18.0	18.0	18.0	18.0	18.0	18.0	18.0	18.0	18.0	18.0
Hold-down tape width	W ₀	MIN.	6.0	6.0	6.0	6.0	11.5	11.5	6.0	6.0	6.0	6.0	6.0
Sprocket hole position	W ₁	±0.5	9.0	9.0	9.0	9.0	9.0	9.0	9.0	9.0	9.0	9.0	9.0
Hold-down tape position	W ₂	MAX.	2.5	2.5	2.5	2.5	2.5	2.5	2.5	2.5	2.5	2.5	2.5
Component-base height	H	±0.75(★2)	17.5(★4)	18.5	20.0	16.0 18.5	16.0 18.5	18.5	17.5 17.5 18.5	17.5 18.5	18.5	18.5	18.5
Lead wire clinch height	H ₀	±0.5	16.0	16.0	16.0	—	—	16.0	—	—	—	—	—
Sprocket hole diameter	ΦD ₀	±0.2	4.0	4.0	4.0	4.0	4.0	4.0	4.0	4.0	4.0	4.0	4.0
Tape thickness(total depth)	t	±0.3	0.6	0.6	0.6	0.6	0.6	0.6	0.6	0.6	0.6	0.6	0.6
Lead wire protrusion	ℓ	MAX.	0	0	0	0	0	0	0	0	0	0	0
Cut position of interior Components	L ₁	MAX.	11.0	11.0	11.0	11.0	11.0	11.0	11.0	11.0	11.0	11.0	11.0

Taping code(standard)	Zig-Zag type	+T	+T	+T	+T +T0	+T +T0	+T	+TS	+TS	+TS0	+TS +TS0	+TS	+TS	+TS
-----------------------	--------------	----	----	----	--------	--------	----	-----	-----	------	----------	-----	-----	-----

Taping code has to be specified after the model number.

Model No. 16ME100HC+T
└ Taping code

(★1) Fig.2, Fig.3:±0.5

(★2) Φ10 · Φ12.5 products (H=18.5): ^{+1.5}_{-0.5}

(★3) Φ16 products:Skip one product at Fig.2

(★4) Φ3×5 products (H=18.5): ^{+0.75}_{-0.5}